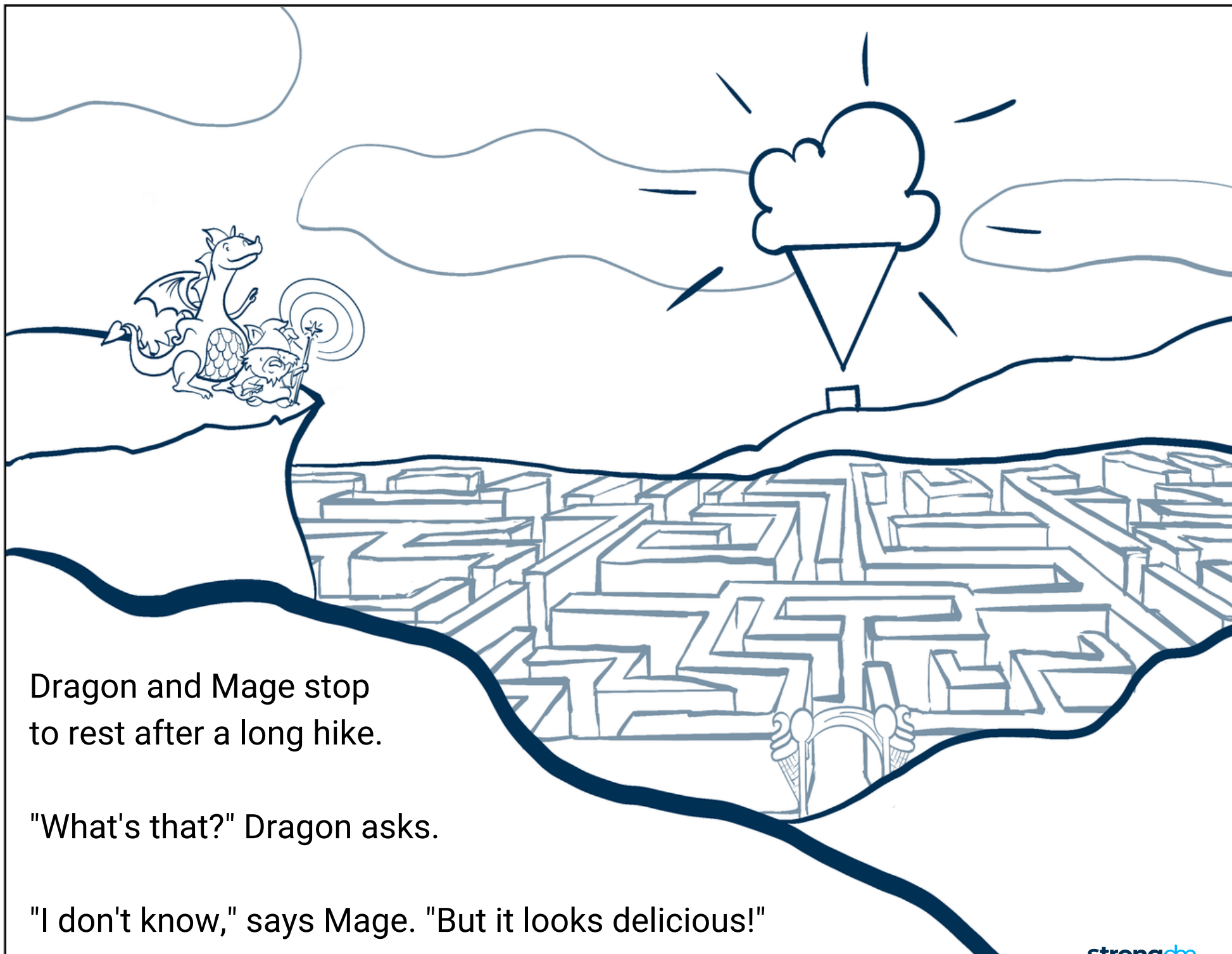




The Adventures of Dragon and Mage

A Quest for the Tastiest Ice Cream

by **strongdm**



Dragon and Mage stop
to rest after a long hike.

"What's that?" Dragon asks.

"I don't know," says Mage. "But it looks delicious!"



Dragon and Mage
are at the gate.

Someone blocks their
way and speaks an ancient
language.

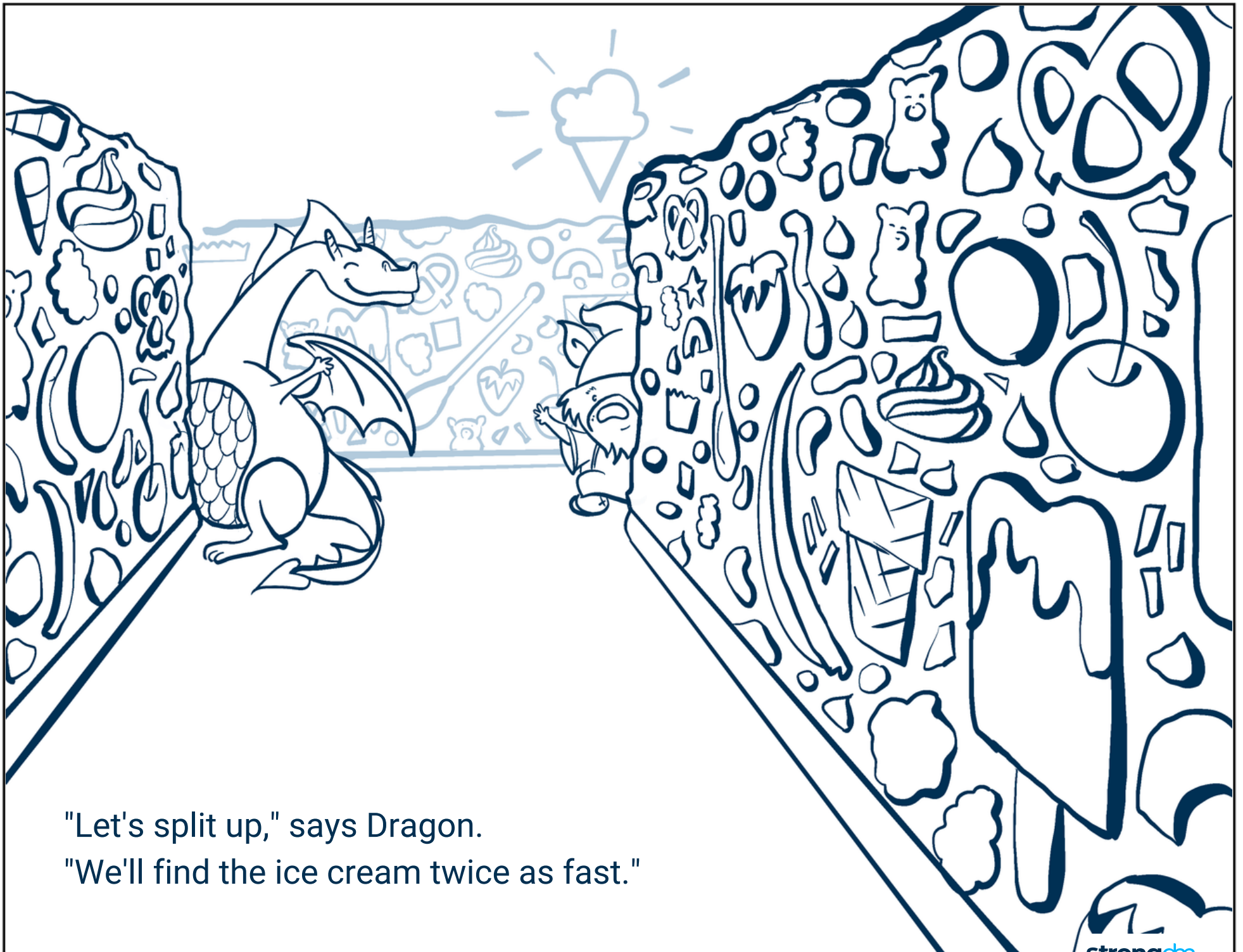


BRAIN FREEZE
CHOCOLATE
CONE
ICE CREAM

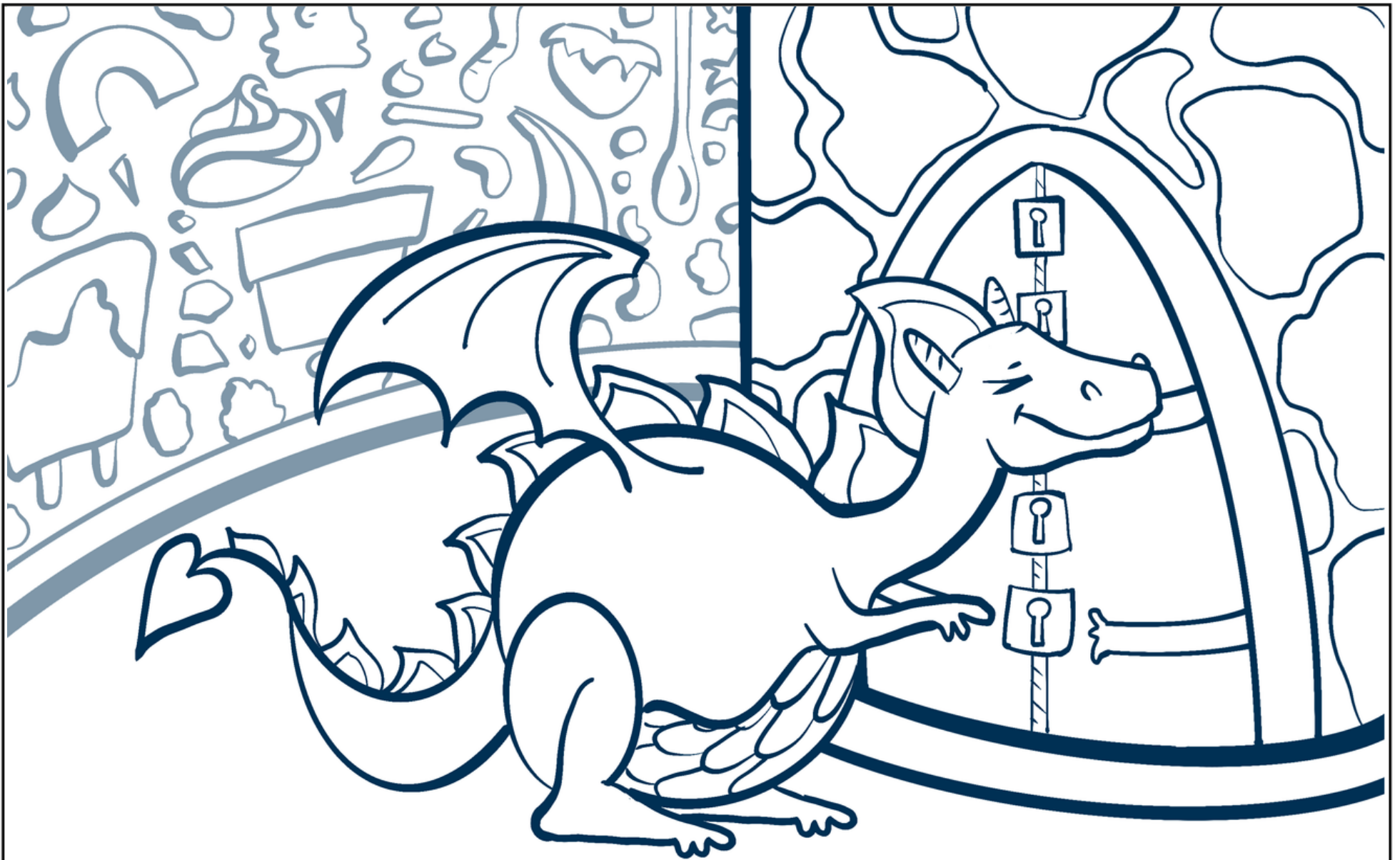
SPRINKLES
STRAWBERRY
SUMMER
SUNDAE

TASTY
VANILLA
YUMMY

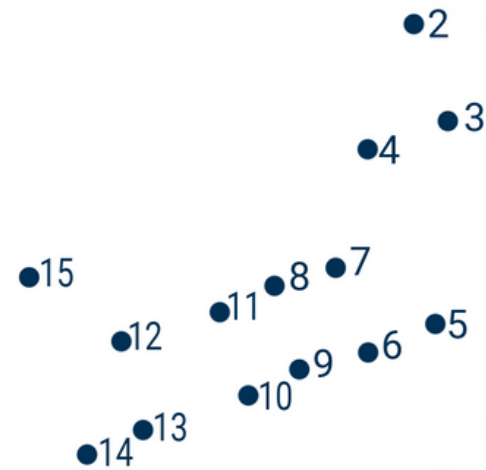
Solve the word search to secure entry into the labyrinth.



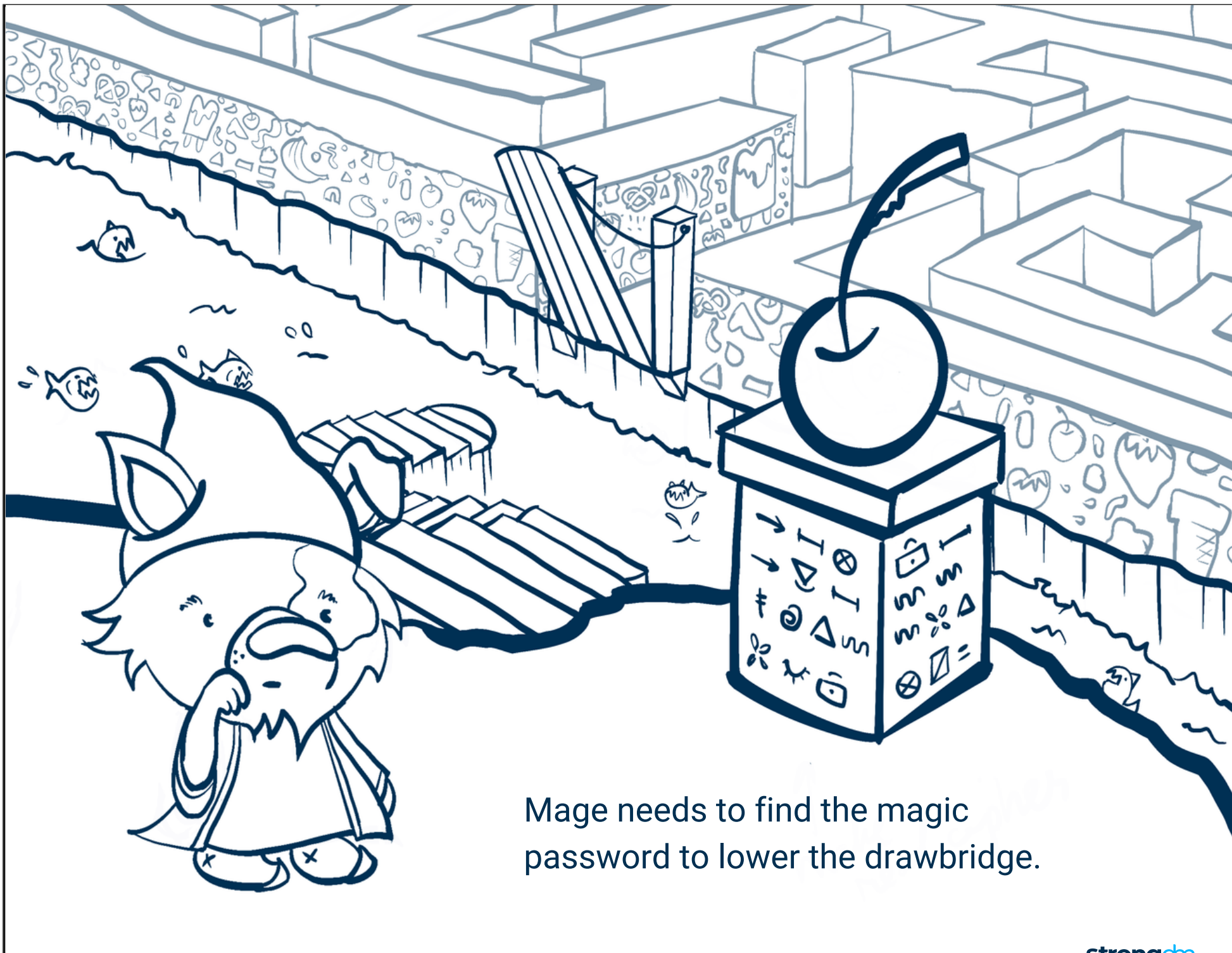
"Let's split up," says Dragon.
"We'll find the ice cream twice as fast."



Dragon comes to a door that's locked. The key is missing.



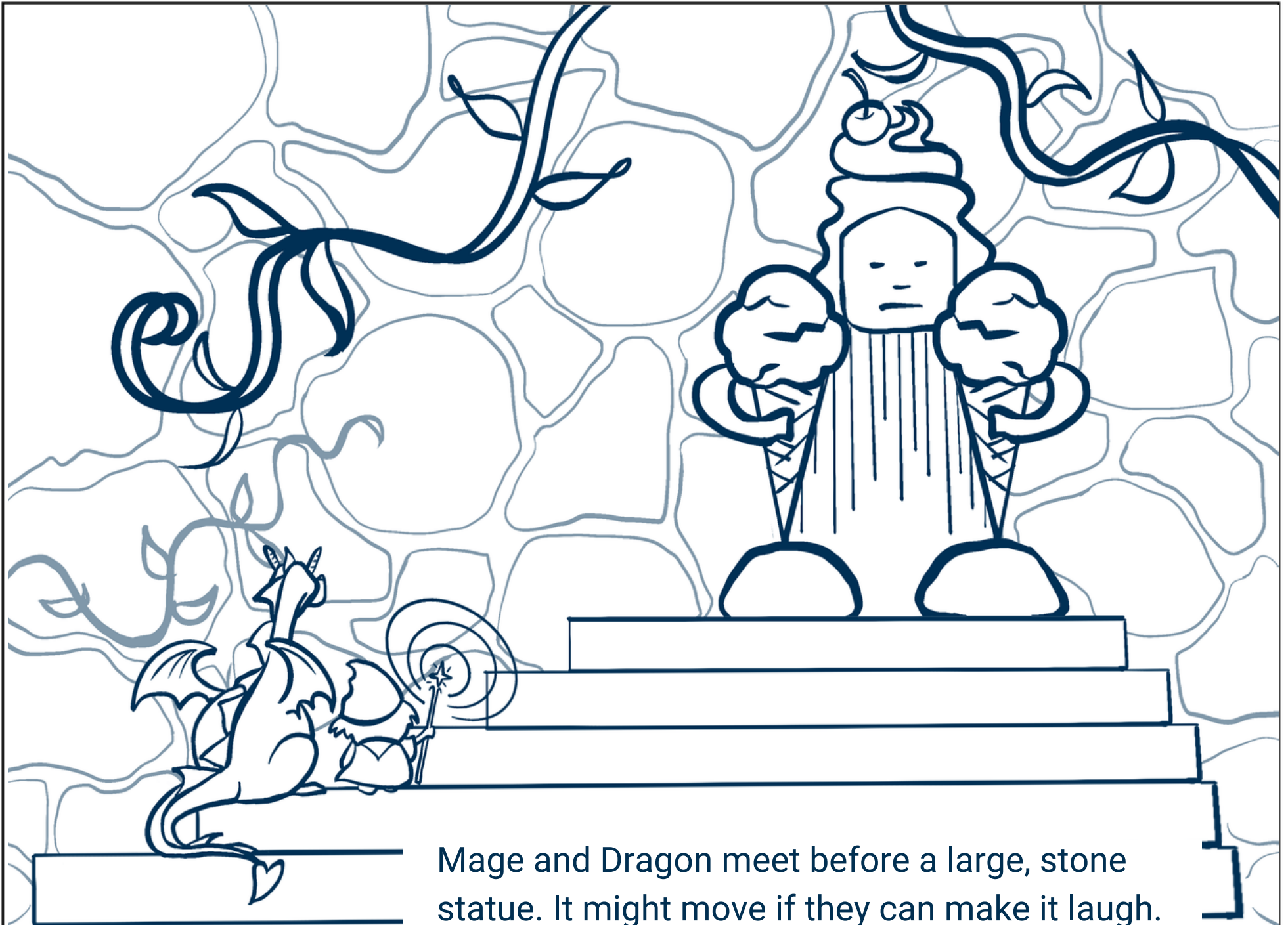
Connect the dots to find the key.



Mage needs to find the magic password to lower the drawbridge.



Can you help Mage decode the password?



Mage and Dragon meet before a large, stone statue. It might move if they can make it laugh.

Complete the story to make the statue laugh.

Mage: To make the statue laugh, we should do a magic trick!

Dragon: Yes! We should do the _____ trick!
[insert noun]

Mage: Wonderful! I love that one because it makes things _____.
[insert adjective]

Dragon: Oh wait! What about the one that makes _____ s _____?
[insert noun] [insert verb]

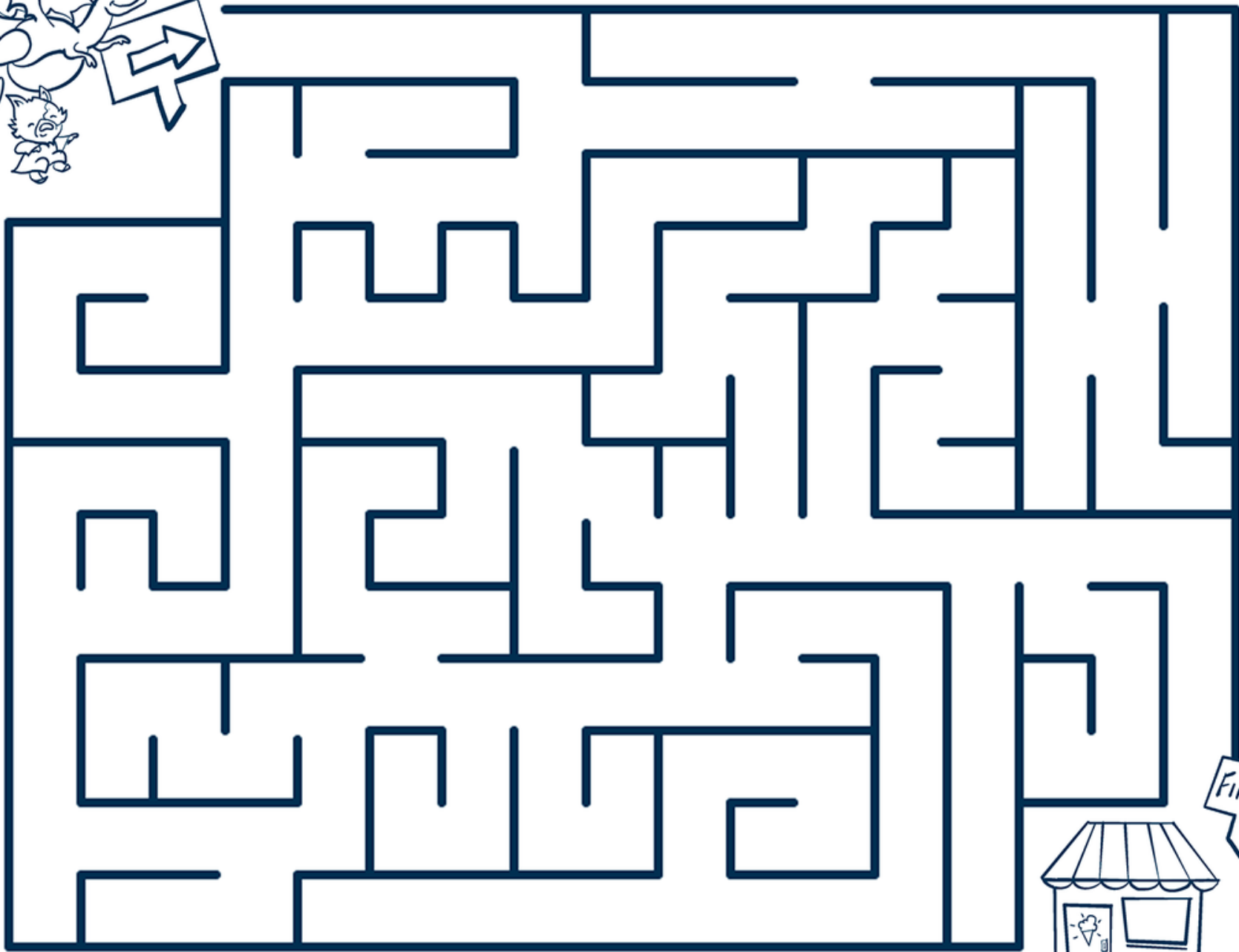
Mage: No, no. Last time we did it, _____ s were _____ ing for _____ days!
[insert number] [insert animal] [insert verb]

Dragon: Do you think the statue would laugh if we turned a _____ into a _____?
[insert adjective] [insert noun] [insert noun]

Mage: Oh doggone it, Dragon! Just make up your mind, or I'll turn you into a _____ that _____ s all day!
[insert adjective] [insert noun] [insert verb]

Statue: Starts to laugh.

Dragon: Oh Mage! You great _____, you've done it! The ice cream is ours!
[silly word]

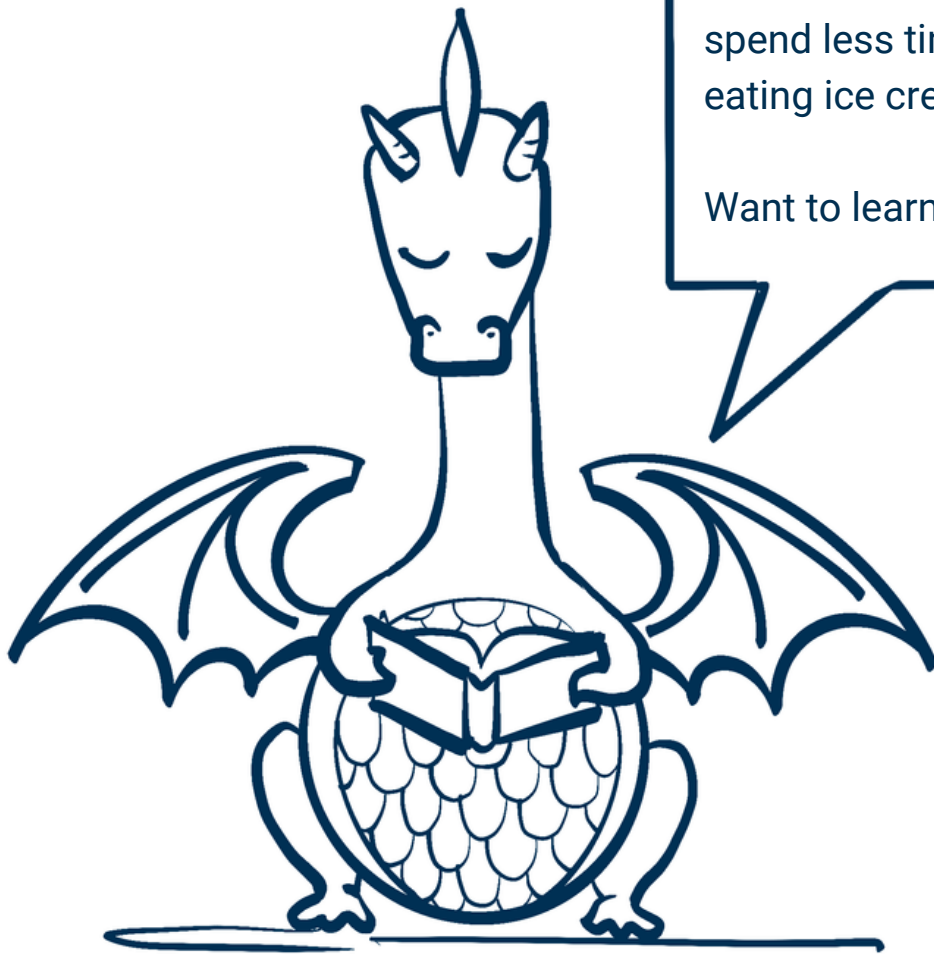


Final dash to the ice cream shop!



"We made it," says Dragon.

"Oh, yummy day!"



About strongDM

Did you know? Behind every game, website, and video on the internet lies a giant maze of computers we call infrastructure. It takes a lot of clever people to make this infrastructure work. Maybe you know one of them 😊.

strongDM's People-First Access platform offers direct access to the infrastructure people need to be productive—so they can spend less time running around solving puzzles and more time eating ice cream with friends.

Want to learn more? Connect with us at www.strongdm.com.